

# Introducing Webfleet Trailer

## POWER UP YOUR TRAILER MANAGEMENT

Proactive monitoring and reporting with Webfleet Trailer



**Work smarter** achieve more

IT • MOBILE • TELEPHONY • TELEMATICS

phone: 03330 434 000

email: [support@communicatebetter.co.uk](mailto:support@communicatebetter.co.uk)

web: [communicatebetter.co.uk](http://communicatebetter.co.uk)



# Power up your trailer management

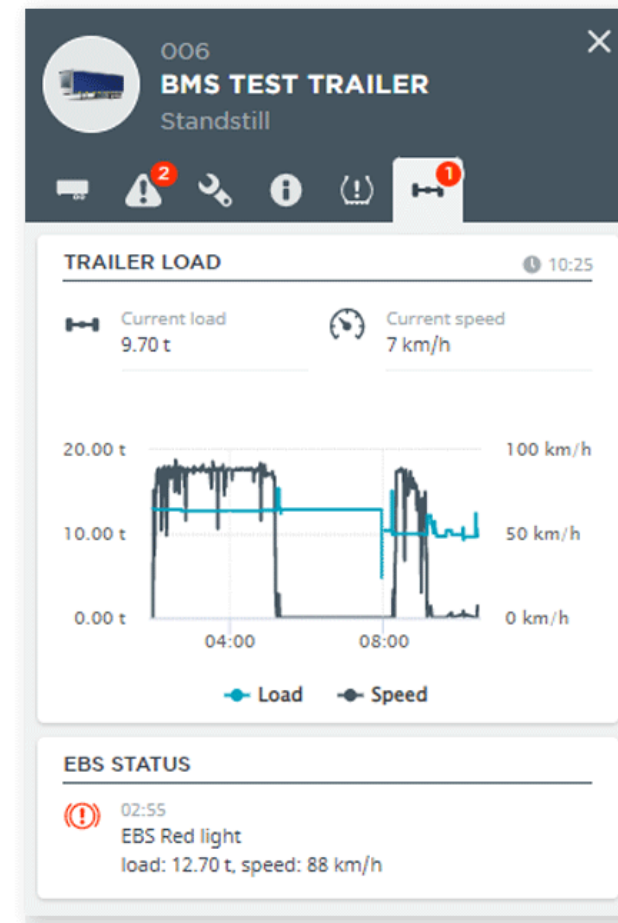
Powered by the durable LINK 350 and connected to all leading trailer EBS (Electronic Braking System) systems, Webfleet Trailer is the proactive monitoring and reporting tool that completes your fleet, with trailer insights fully integrated into the Webfleet telematics platform.

Webfleet Trailer brings you actionable insights about the status of your trailer fleet so you can improve utilisation, save costs, boost efficiency and enhance safety.

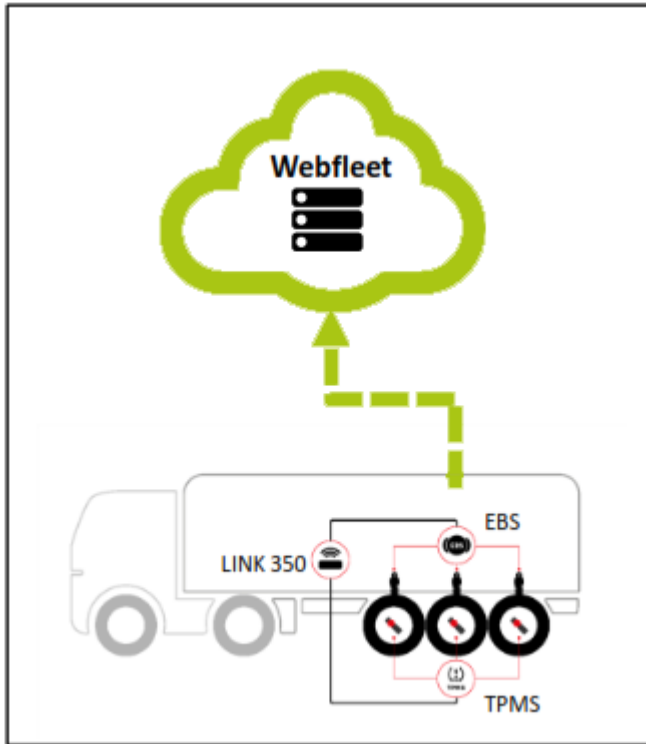
# Highlights

Webfleet Trailer, the advanced trailer management solution for fleets with trailers:

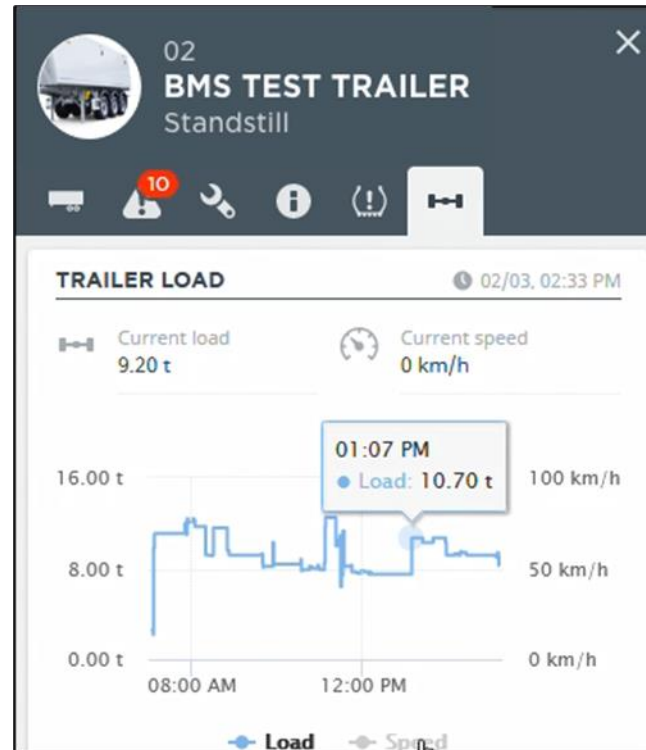
- Dedicated overview of your Trailers, with location, load, mileage, coupled or standstill status, all in one interface via the Asset module.
- Provides overall payload weight status, detailed weight view by axle, plus warnings of EBS overloading events.
- Configurable payload threshold limits by editing the reporting section of the Assets
- Loading/unloading events recorded along with warnings of overload limit breaches.
- Notifications warn of trailer system malfunctions such as braking and stability systems.
- Alerts to TPMS-related events, e.g. pressure loss or high temperature.
- Monitors trip details in real-time or over a chosen period and get notified when a trailer leaves a defined area.
- Durable LINK 350, with integrated GPS and embedded rechargeable battery:
  - Connects to all leading trailer EBS brands
  - Captures real-time trailer data from EBS and TPMS systems (WABCO, HALDEX, KNORR)
  - Position updates every 2 minutes (external power when coupled) and every 15 minutes (battery powered)
  - Stationary updates every 1 hour (external power when coupled) and every 24 hours (battery powered)



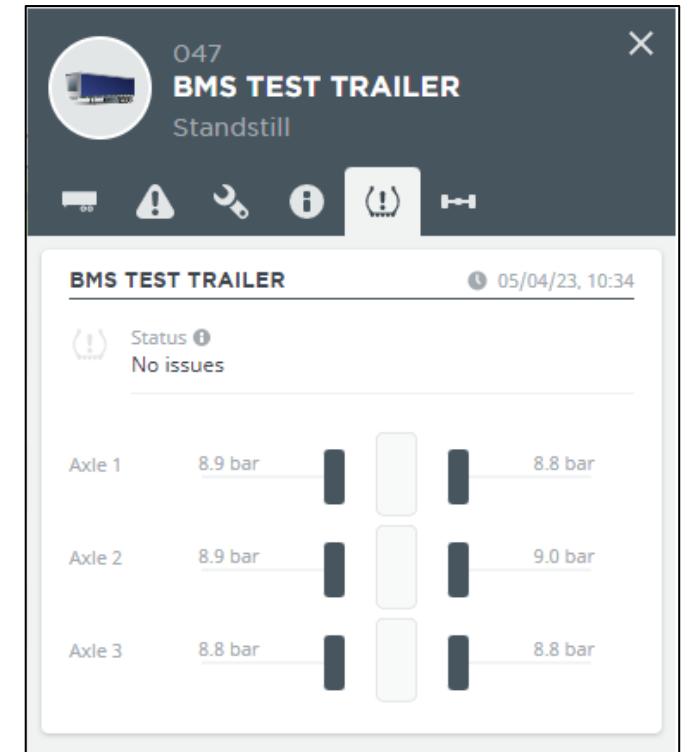
# Solution Breakdown



**1** The LINK 350 can be connected directly via the trailer's electronic braking system modulator. The LINK contains an embedded SIM, battery, and acts as a TPMS receiver to serve as an autonomous trailer telematics.



**2** Trailers show up incorporated within the Webfleet "Assets" module. The additional data, both "EBS" and "TPMS" for trailers, are accessed within the respective "EBS" or "TPMS" tab from the compact views.



**3** TPMS for trailers, via the LINK 350 and strap mounted sensors, will show up consistent with current Webfleet TPMS user interfaces.

# Key Features



## Utilisation insights

Empty and loaded status by miles travelled and current axle weight to optimise trailer usage and billing.



## Track and trace

Monitor trip details such as trip times, distance, speed, standstill, in real-time or over a chosen period. Trace view shows where trailers are with position updates every two minutes<sup>1</sup>.



## Proactive maintenance

Notifications flag trailer system malfunctions and receive reminder alerts to pending maintenance tasks.



## Coupling

Automatic coupling detection showing the coupling status of your trailers and vehicles and helping to easily identify which trailer is connected<sup>2</sup>.



## Safety monitoring

Configure payload limits and receive alerts of overloading, rollover stability, harsh braking and anti-lock braking events.



## Security notifications

Get notified when a trailer leaves a defined area or when a movement is detected.



## 24/7 tyre view

Access live and historical data for all TPMS-equipped trailers. Alarms warn of abnormal pressure or temperature<sup>3</sup>.





# Trailer load & utilisation

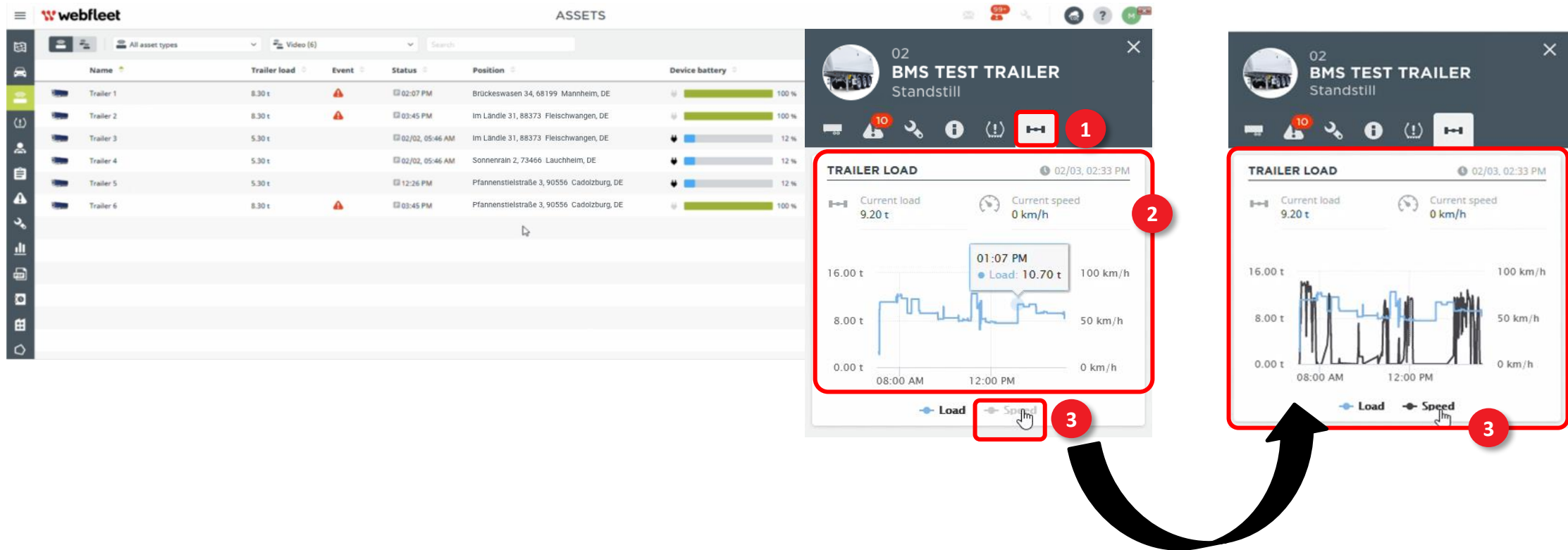
1. Trailers in Webfleet with LINK 350 units show up inside the existing “Assets module”
2. For those trailers, see current payload status straight from within the overview list
3. Filter quickly for trailers with warnings or notifications

Name	Trailer load	Event	Status	Position	Device battery	Odo...	License plate	Last update	No.
Trailer 1	8.30 t	⚠	02:07 PM	Brückeswasen 34, 68199 Mannheim, DE	100 %	242,595.0 ...	BDS	03:21 PM	042
Trailer 2	8.30 t	⚠	03:45 PM	Im Ländle 31, 88373 Fleischwangen, DE	100 %	263,343.0 ...	BDR	03:46 PM	043
Trailer 3	5.30 t		02/02, 05:46 AM	Im Ländle 31, 88373 Fleischwangen, DE	12 %	1,000 m	BDR	03:22 PM	044
Trailer 4	5.30 t		02/02, 05:46 AM	Sonnenrain 2, 73466 Lauchheim, DE	12 %	1,000 m	BDR	03:22 PM	045
Trailer 5	5.30 t		12:26 PM	Pfannenstielstraße 3, 90556 Cadolzburg, DE	12 %	1,000 m	BDR	03:22 PM	046
Trailer 6	8.30 t	⚠	03:45 PM	Pfannenstielstraße 3, 90556 Cadolzburg, DE	100 %	379,578.0 ...	BDR	03:45 PM	047



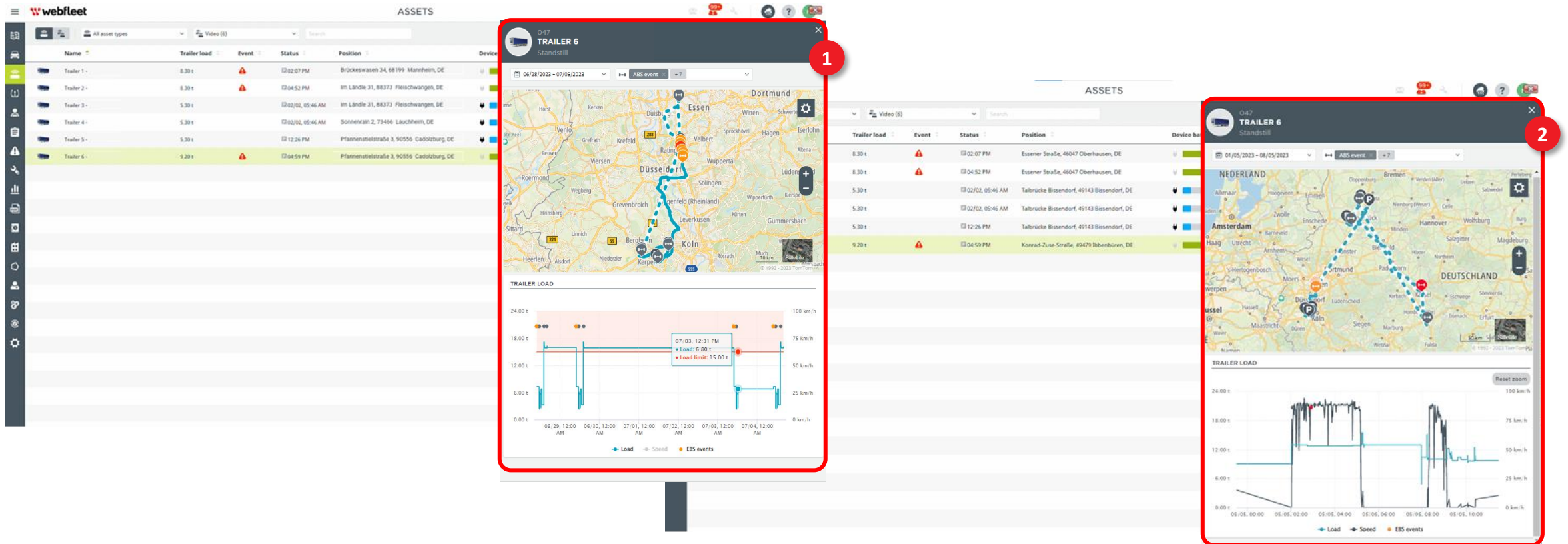
# Trailer load & utilisation

- Click a specific trailer to access the new compact EBS tab
- Review the real-time axel load status and speed
- Quickly zoom-in on the load and speed throughout the current day



# Asset List View – Trailer load status

1. From the EBS tab in the compact view, clicking details brings a larger, 1-week overview with date picker option
2. Load data can further be overlaid with speed





# Trailer safety monitoring

1. Configure payload threshold limits by editing the reporting section of the Assets card
2. Loading/unloading events are recorded along with warnings of overload limit breaches inside the Asset notification tab
3. EBS warnings and events such as harsh braking, ABS activation, stability concerns, and system faults notifications

**TRAILER LOAD** 26/05, 16:07

Current load: 16.00 t  
 Current speed: 11 km/h

+ 500.0 kg

Trailer load limit reference exceeded!

No data

**TRAILER 6**  
Standstill

**POSITION**  
Position: 11:41 (since -9 min), Zum Barkhoff 7, 49451 Holdorf, DE

**STATUS**  
Odometer: 242,429 km  
 Device battery: 100 %  
 Motion notification: Disabled

**DETAILS**  
Name: Trailer 6  
 Number: 047  
 Asset type: Trailer  
 Number plate: —  
 Registration date: —

**REPORTING**  
Load limit reference: 20000 kg (Account settings)

**GROUPS**

Show on map **1** Edit

**TRAILER 6**  
Standstill

**DETAILS**  
Name\*: Trailer 6  
 Number: 047  
 Number plate: —  
 Asset type: Trailer  
 Registration date: —  
 Odometer: 242429 km

**REPORTING**  
Load limit:  
 20000 kg (Account settings)  
 Asset-specific  
 \_\_\_\_\_ kg

Cancel Save **1**

**TRAILER 6**  
Standstill

11:15  
Trailer unloading event from 8000 kg to 7500 kg  
Resolve

10:53  
Trailer loading event from 7300 kg to 8000 kg  
Resolve

**2**

**TRAILER 6**  
Standstill

09:53  
Trailer unloading event from 16100 kg to 7300 kg  
Resolve

09:53  
Roll Stability Support event  
Resolve

09:52  
Driving without ISO cable  
Resolve

09:51  
EBS Amber light  
Resolve

**3**



# Trailer safety monitoring

1. Review event notification and warnings for rollover stability, harsh braking, anti-lock braking along with standard asset alerts

The screenshot displays the 'webfleet ASSETS' interface. The main table lists six trailers with columns for Name, Trailer load, Event, Status, Position, Device battery, Odo..., and License plate. Trailer 6 is highlighted with a red circle, and its event notification panel is open on the right, also circled in red. The panel shows a list of events for Trailer 6, including 'Trailer unloading event from 16100 kg to 7300 kg', 'Roll Stability Support event', 'Driving without ISO cable', 'EBS Amber light', 'EBS Red light', 'Harsh braking', and 'ABS event'. Each event has a 'Resolve' button. At the bottom of the panel, there are buttons for 'Acknowledge all' and 'Resolve all (19)'.

Name	Trailer load	Event	Status	Position	Device battery	Odo...	License plate
Trailer 1	8.30 t	⚠️	📅 02:07 PM	Brückeswasen 34, 68199 Mannheim, DE	🔋 100 %	242,595.0 ...	BDS1 SMR
Trailer 2	8.30 t	⚠️	📅 03:45 PM	Im Ländle 31, 88373 Fleischwangen, DE	🔋 100 %	263,343.0 ...	BDR SMS
Trailer 3	5.30 t		📅 02/02, 05:46 AM	Im Ländle 31, 88373 Fleischwangen, DE	🔋 12 %	1,000 m	BDR SMT
Trailer 4	5.30 t		📅 02/02, 05:46 AM	Sonnenrain 2, 73466 Lauchheim, DE	🔋 12 %	1,000 m	BDR SMU
Trailer 5	5.30 t		📅 12:26 PM	Pfannenstielstraße 3, 90556 Cadolzburg, DE	🔋 12 %	1,000 m	BDR SMW
Trailer 6	8.30 t	⚠️	📅 03:45 PM	Pfannenstielstraße 3, 90556 Cadolzburg, DE	🔋 100 %	379,578.0 ...	BDR SMY

Event notification panel for Trailer 6 (Standstill):

- 09:53 Trailer unloading event from 16100 kg to 7300 kg (Resolve)
- 09:53 Roll Stability Support event (Resolve)
- 09:52 Driving without ISO cable (Resolve)
- 09:51 EBS Amber light (Resolve)
- 09:50 EBS Red light (Resolve)
- 09:49 Harsh braking (Resolve)
- 09:48 ABS event (Resolve)

Buttons: Acknowledge all, Resolve all (19)

# Trailer safety monitoring

1. Configure payload threshold limits by editing the reporting section of the Assets card
2. Loading/unloading events are recorded along with warnings of overload limit breaches inside the Asset notification tab

047 TRAILER 6 Standstill

**POSITION**

Position  
P 11:41 (since -9 min), Zum Barkhoff 7, 49451 Holdorf, DE

**STATUS**

Odometer 242,429 km Device battery 100 %

Motion notification Disabled

Vehicle —

Additional information —

**DETAILS**

Name Trailer 6

Number 047 Asset type Trailer

Number plate — Registration date —

**REPORTING**

Load limit reference 20000 kg (Account settings)

**GROUPS**

Show on map **1** Edit

047 TRAILER 6 Standstill

**DETAILS**

Name\* Trailer 6

Number 047

Number plate — Change

Asset type Trailer

Registration date —

Odometer 242429 km

Additional information

**REPORTING**

Load limit

20000 kg (Account settings)

Asset-specific

kg

Cancel Save

**1**

047 TRAILER 6 Standstill

**11:15** Trailer unloading event from 8000 kg to 7500 kg Resolve

**10:53** Trailer loading event from 7300 kg to 8000 kg Resolve

**2**



## Summary highlights

- Locates trailer position with integrated GPS module
- Automatically captures and sends data in real-time from EBS system
- Works with all major EBS brands (WABCO, HALDEX, KNORR)
- Gateway to TPMS data, captures and sends directly or indirectly (via EBS) to Webfleet
- Device works when trailer is not powered / coupled due to embedded, rechargeable battery
- Compliance with CE, ISO 16750, ADR (EX/II, AT)\* regulations and standards
- Operates to the highest IP6K9K\* protection rating and temperature range from -40 °C to +75 °C

Contact Communicate Better



Work smarter achieve more

IT • MOBILE • TELEPHONY • TELEMATICS

phone: 03330 434 000

email: [support@communicatebetter.co.uk](mailto:support@communicatebetter.co.uk)

web: [communicatebetter.co.uk](http://communicatebetter.co.uk)



**Communicate Better**®

powered by Daisy Communications